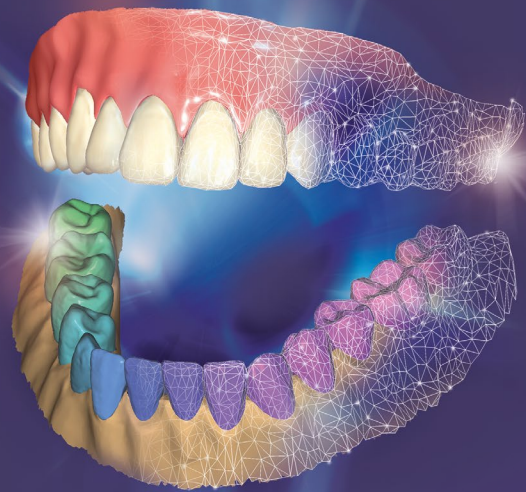


FOR MORE AUTOMATION

UPGRADE NOW!



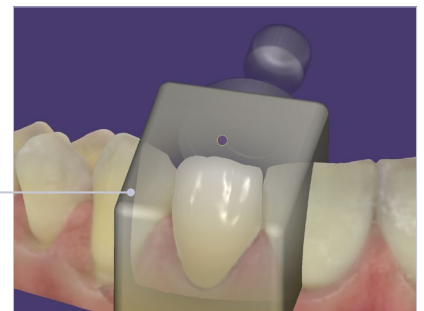
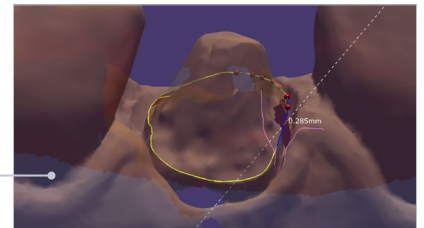
60+

NEW
FEATURES

DentalCAD® 3.2 Elefsina at a glance

New features, more automation and seamless integration

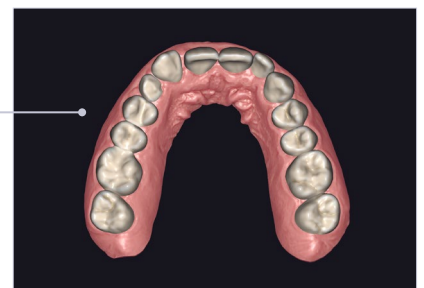
- **Preparation margin repair tool** enables you to make the most out of imperfect intraoral scans: fix margins to get an acceptable result despite artifacts or holes in the scan
- Save time with **Auto Articulator** for automatic dynamic occlusion*
- **Integration of compact milling machines:** select your preferred block and start production seamlessly from within your CAD software*
- **Switch** tooth libraries while **keeping the previous setup**



*Requires add-on module

Elevated *Smile Creator* for better visualization and pre-operative treatment planning

- Design smiles **with virtual gingiva** for superior outcomes
- Design smiles based on patients' **natural teeth**
- Improved 3D-to-photo alignment: **adjust 3D view to match rendering to the camera's focal length**



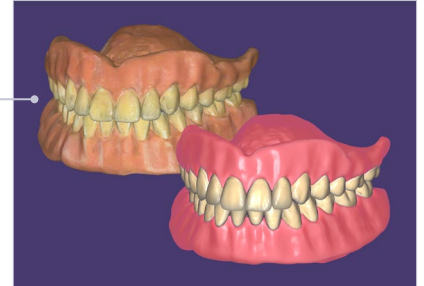
Bite Splint Module offers more design speed

- More **automation** in bite splint design
- Design **bite splints for both arches simultaneously**



Full Denture Module improved

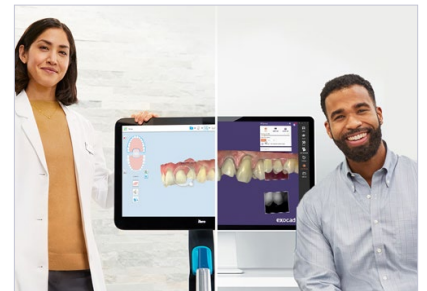
- **Copy Denture:** Instead of relining an old denture, **rapidly and inexpensively produce a new one**
- Design **dentures on ball attachments**
- Add-on for the **Ivotion™ Denture System** now available with the *Full Denture Module**



*Ivotion™ library purchase from Ivoclar required

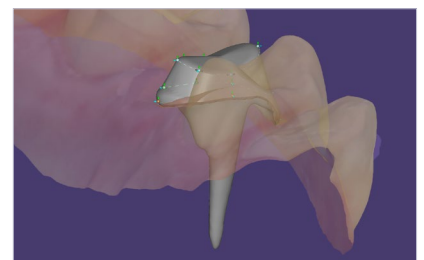
iTero-exocad Connector™ redefines seamless workflows

- Lab/doctor collaboration: **doctors can now share external case-related files** (images, videos and X-rays) via MyiTero™ portal
- New **bi-directional case communication** lets you share designs in 3D
- **Validate margins** with iTero intraoral camera images and visualization of tooth structure with iTero Niri images



New beta feature: post and core*

- Design **post and core** restorations
- A **crown matching the core** can then be **directly designed**



*Available upon request for beta testers

Get the full highlights from your reseller.



Premier Authorized Distributor

**ETI DIGITAL
TECHNOLOGY**

The Future in Dental Healthcare

Direct 714-238-1490

www.etidigitaltechnology.com

sales@etidigitaltechnology.com



FOLLOW US!

COMPLETE SUPPORT FROM OUR EXPERIENCED DIGITAL TEAM